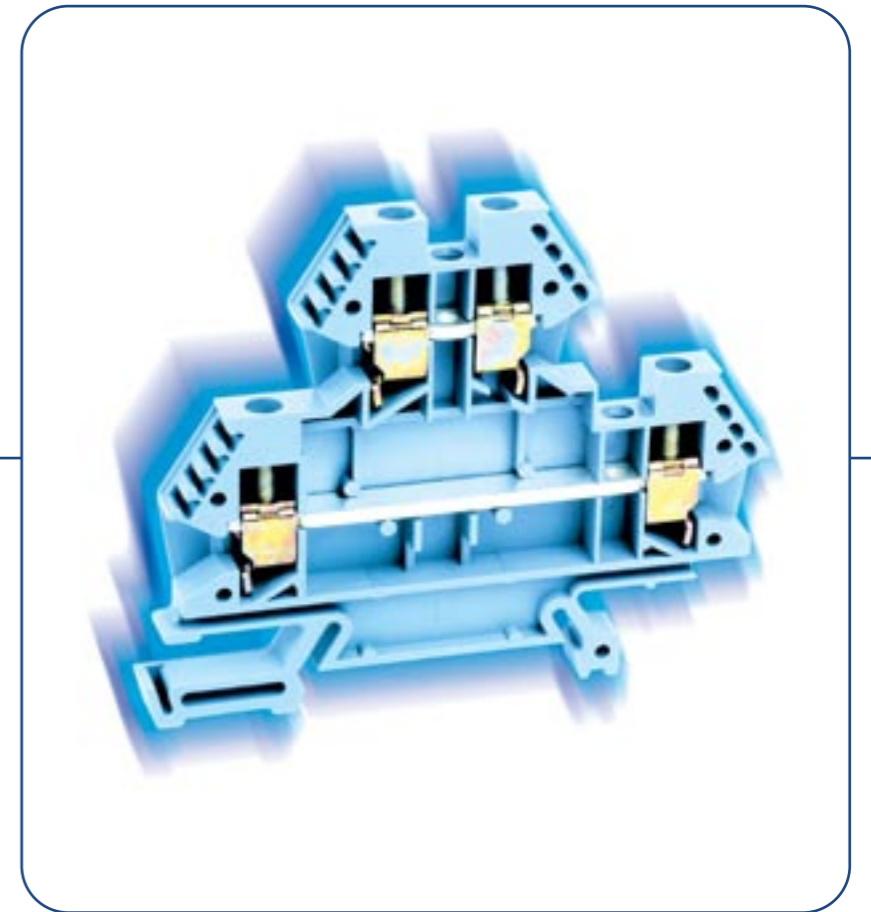




M O R S E T T I T A L I A

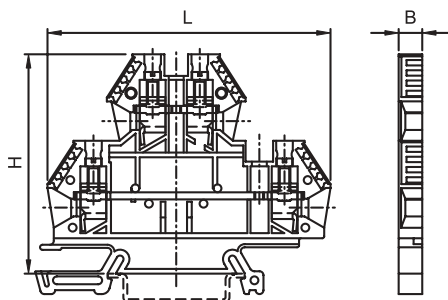
Morsetti doppi  
*Two-Stage Terminal Blocks*

EURO D



## EURO D 4-2/35











PER/for TS35x7,5 EN 60715



## 43461






Sezione nominale 4 mm<sup>2</sup>/Rated cross-section 4 mm<sup>2</sup>

Pz. conf: 50/Qty. p.pck: 50

|               |   |                           |
|---------------|---|---------------------------|
| Art. 43461    |    | grigio/grey               |
| Art. 43461 BL |    | blu/blue                  |
| Art. 43461 BK |    | nero/black                |
| Art. 43461 BR |   | marrone/brown             |
| Art. 43461 E  |  | giallo-verde/green-yellow |
| Art. 43461 GR |  | verde/green               |
| Art. 43461 N  |  | giallo/yellow             |
| Art. 43461 OR |  | arancione/orange          |
| Art. 43461 RD |  | rosso/red                 |
| Art. 43461 WT |  | bianco/white              |

## APPROVAZIONI

Approvals

|   |   |  |                   |
|---|---|--|-------------------|
| SEV   |    | 800V<br>4 mm <sup>2</sup>                | 32A               |
|  | KEMA  | II 2 GD EEx e II<br>03ATEX2118 U<br>750V | 4 mm <sup>2</sup> |
| RINA  |   | 800V<br>4 mm <sup>2</sup>                | 32A               |
| VDE   |    | 800V<br>4 mm <sup>2</sup>                | 32A               |
| UL  |   | 600V<br>AWG: 24-10<br>FW 2               | 30A               |
| CSA   |  | 600V<br>AWG: 24-10                       | 30A               |

DATI TECNICI  
TECHNICAL DATACorpo isolante: Poliammide 66.6 VO  
Plastic body: Polyamide 66.6 VOBarrette: Rame argentato  
Internal bus: Silver plated copperMassello: Acciaio, zincato  
e cromatizzato  
Clamp: Hardened steel, electroplated  
with zinc chromatedViti: Acciaio, zincate  
e cromatizzate  
Screws: Steel, zinc plated and chromatedTratto da spellare: 10 mm  
Stripping length: 10 mmMomento torcente: Max 0.6 Nm  
Tightening torque: Max 0.6 NmIdentificazione: a 4 posti su ambo i lati  
Marking: 4 slots on both sidesSpessore (B): 6 mm  
Width (B): 6 mmLunghezza (L): 72 mm  
Length (L): 72 mmAltezza (H): 55 mm  
Height (H): 55 mmImbocco: 4 x 3.3 mm  
Opening: 4 x 3.3 mmViti morsetto: M 3  
Terminal screw: M 3Resistenza alle correnti  
superficiali:  
Tracking resistance:  
IEC 112: CTI >600  
VDE 0303: KB >600CAPACITÀ DI CONNESSIONE  
CONNECTING CAPACITY

## EURO D 4-2/35

Conduttori rigidi  
Rigid conductorsmm<sup>2</sup> 0.5-6Conduttori flessibili  
Flexible conductorsmm<sup>2</sup> 0.5-4Conduttori con puntalini  
Conductors with ferrulesDIN 46288/1  
mm<sup>2</sup> 0.5-4AWG  
AWG

24-10

Calibri  
Gauges

A4

Numero di conduttori collegabili  
Number of connectable conductors4x1.5 mm<sup>2</sup>





# EURO D 4-2/35 unipolare/ cross connected

PER/for TS35x7,5 EN 60715

## APPROVAZIONI

### Approvals

SEV  800V 32A  
4 mm<sup>2</sup>

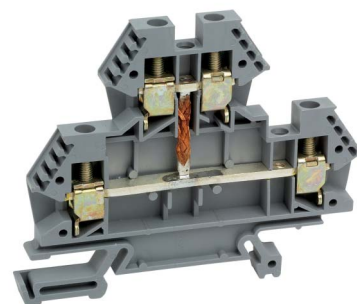
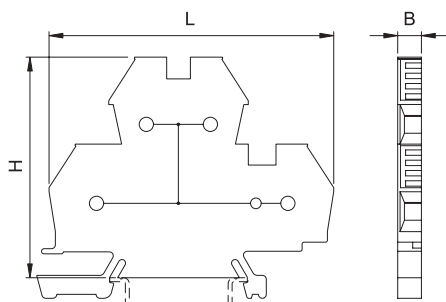
 KEMA II 2 GD EEx e II  
03ATEX2118 U  
750V 4 mm<sup>2</sup>

RINA 800V 32A  
4 mm<sup>2</sup>

VDE  800V 32A  
IEC 947-7-1 4 mm<sup>2</sup>

UL  600V 30A  
AWG: 24-10  
FW 2

CSA  600V 30A  
AWG: 24-10



## 43462

Sezione nominale 4 mm<sup>2</sup>/Rated cross-section 4 mm<sup>2</sup>  
Pz. conf: 50/Qty. p.pck: 50

|               |  |                           |
|---------------|--|---------------------------|
| Art. 43462    |    | grigio/grey               |
| Art. 43462 BL |   | blu/blue                  |
| Art. 43462 E  |  | giallo-verde/green-yellow |
| Art. 43462 N  |  | giallo/yellow             |

## CAPACITÀ DI CONNESSIONE CONNECTING CAPACITY

EURO D 4-2/35 unipolare/cross connected

Conduttori rigidi Rigid conductors mm<sup>2</sup> 0.5-6

Conduttori flessibili Flexible conductors mm<sup>2</sup> 0.5-4

Conduttori con puntalini Conductors with ferrules DIN 46288/1  
mm<sup>2</sup> 0.5-4

AWG AWG 24-10

Calibri Gauges A4

Numero di conduttori collegabili Number of connectable conductors 4x1.5 mm<sup>2</sup>

## DATI TECNICI TECHNICAL DATA

Corpo isolante: Poliammide 66.6 VO  
Plastic body: Polyamide 66.6 VO

Barrette: Rame argentato  
Internal bus: Silver plated copper

Massello: Acciaio, zincato e cromatizzato  
Clamp: Hardened steel, electroplated with zinc chromated

Viti: Acciaio, zincate e cromatizzate gialle  
Screws: Steel, zinc plated and chromated

Tratto da spellare: 10 mm  
Stripping length: 10 mm

Momento torcente: Max 0.6 Nm  
Tightening torque: Max 0.6 Nm

Identificazione: a 4 posti su ambo i lati  
Marking: 4 slots on both sides

Spessore (B): 6 mm  
Width (B): 6 mm

Lunghezza (L): 72 mm  
Length (L): 72 mm

Altezza (H): 55 mm  
Height (H): 55 mm

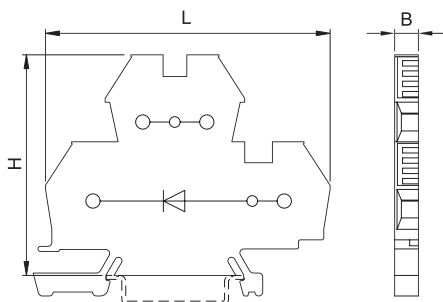
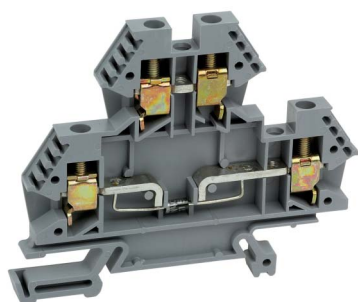
Imbocco: 4 x 3.3 mm  
Opening: 4 x 3.3 mm

Viti morsetto: M 3  
Terminal screw: M 3

Resistenza alle correnti superficiali:  
Tracking resistance:  
IEC 112: CTI >600  
VDE 0303: KB >600

**EURO D 4-2/35** diodo/diode

PER/for TS35x7,5 EN 60715

**43472**

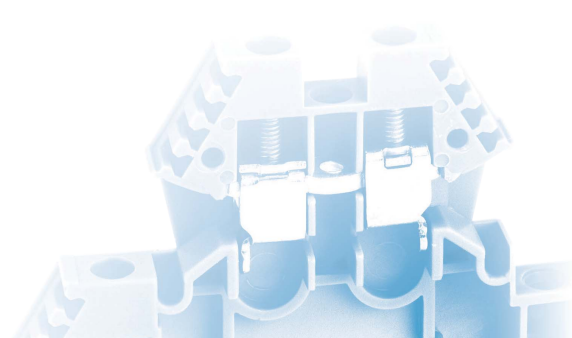
Sezione nominale 4 mm<sup>2</sup> // Rated cross-section 4 mm<sup>2</sup>  
 Diode: 1 N 4007 1A 1000V / Diode: 1 N 4007 1A 1000V  
 Pz. conf: 50 / Qty. p.pck: 50

**Art. 43472**

grigio/grey

**APPROVAZIONI**

Approvals

SEV  4 mm<sup>2</sup>RINA 4 mm<sup>2</sup>VDE  4 mm<sup>2</sup>  
IEC 947-7-1UL  AWG: 24-10  
FW 2CSA  AWG: 24-10**DATI TECNICI**  
TECHNICAL DATA

**Corpo isolante: Poliammide 66.6 VO**  
 Plastic body: Polyamide 66.6 VO

**Barrette: Rame argentato**  
 Internal bus: Silver plated copper

**Massello: Acciaio, zincato e cromatizzato**  
 Clamp: Hardened steel, electroplated with zinc chromated

**Viti: Acciaio, zincate e cromatizzate**  
 Screws: Steel, zinc plated and chromated

**Tratto da spellare: 10 mm**  
 Stripping length: 10 mm

**Momento torcente: Max 0.6 Nm**  
 Tightening torque: Max 0.6 Nm

**Identificazione: a 4 posti su ambo i lati**  
 Marking: 4 slots on both sides

**Spessore (B): 6 mm**  
 Width (B): 6 mm

**Lunghezza (L): 72 mm**  
 Length (L): 72 mm

**Altezza (H): 55 mm**  
 Height (H): 55 mm

**Imbocco: 4 x 3.3 mm**  
 Opening: 4 x 3.3 mm

**Viti morsetto: M 3**  
 Terminal screw: M 3

**Resistenza alle correnti superficiali:**  
 Tracking resistance:  
 IEC 112: CTI >600  
 VDE 0303: KB >600

**CAPACITÀ DI CONNESSIONE**  
CONNECTING CAPACITY**EURO D 4-2/35 diodo/diode**

**Conduttori rigidi** mm<sup>2</sup> 0.5-6  
 Rigid conductors

**Conduttori flessibili** mm<sup>2</sup> 0.5-4  
 Flexible conductors

**Conduttori con puntalini** DIN 46288/1  
 Conductors with ferrules mm<sup>2</sup> 0.5-4

**AWG** 24-10  
 AWG

**Calibri** A4  
 Gauges

**Numero di conduttori collegabili** 4x1.5 mm<sup>2</sup>  
 Number of connectable conductors



# EURO D 4-2/35 diodo/diode

PER/for TS35x7,5 EN 60715

## APPROVAZIONI

Approvals

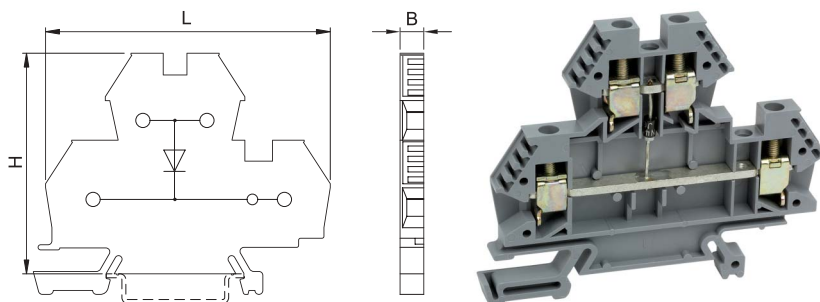
SEV  4 mm<sup>2</sup>

RINA 4 mm<sup>2</sup>

VDE  4 mm<sup>2</sup>  
IEC 947-7-1

UL  AWG: 24-10  
FW 2

CSA  AWG: 24-10



## 43473

Sezione nominale 4 mm<sup>2</sup>/Rated cross-section 4 mm<sup>2</sup>

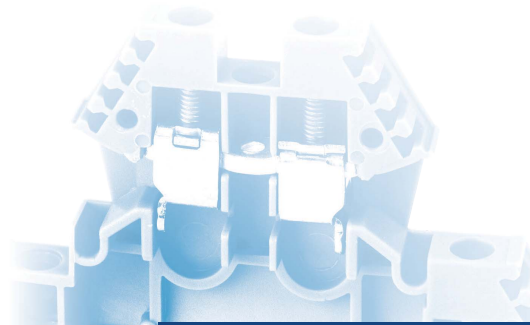
Diodo: 1 N 4007 1A 1000V/Diode: 1 N 4007 1A 1000V

Pz. conf: 50/Qty. p.pck: 50

Art. 43473

Art. 43473 BL

 grigio/grey  
 blu/blue



## CAPACITÀ DI CONNESSIONE CONNECTING CAPACITY

### EURO D 4-2/35 diodo/diode

Conduttori rigidi  
Rigid conductors mm<sup>2</sup> 0.5-6

Conduttori flessibili  
Flexible conductors mm<sup>2</sup> 0.5-4

Conduttori con puntalini  
Conductors with ferrules DIN 46288/1  
mm<sup>2</sup> 0.5-4

AWG 24-10  
AWG

Calibri A4  
Gauges

Numero di conduttori collegabili  
Number of connectable conductors 4 x 1.5 mm<sup>2</sup>

## DATI TECNICI TECHNICAL DATA

Corpo isolante: Poliammide 66.6 VO  
Plastic body: Polyamide 66.6 VO

Barrette: Rame argentato  
Internal bus: Silver plated copper

Massello: Acciaio, zincato  
e cromatizzato  
Clamp: Hardened steel, electroplated  
with zinc chromated

Viti: Acciaio, zincate  
e cromatizzate  
Screws: Steel, zinc plated and chromated

Tratto da spellare: 10 mm  
Stripping length: 10 mm

Momento torcente: Max 0.6 Nm  
Tightening torque: Max 0.6 Nm

Identificazione: a 4 posti su ambo i lati  
Marking: 4 slots on both sides

Spessore (B): 6 mm  
Width (B): 6 mm

Lunghezza (L): 72 mm  
Length (L): 72 mm

Altezza (H): 55 mm  
Height (H): 55 mm

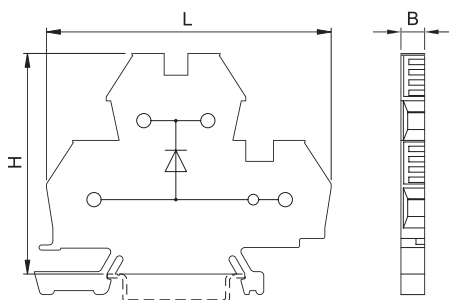
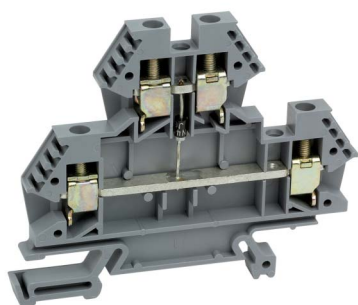
Imbocco: 4 x 3.3 mm  
Opening: 4 x 3.3 mm

Viti morsetto: M 3  
Terminal screw: M 3

Resistenza alle correnti  
superficiali:  
Tracking resistance:  
IEC 112: CTI >600  
VDE 0303: KB >600

**EURO D 4-2/35** diodo/diode

PER/for TS35x7,5 EN 60715

**43474**

Sezione nominale 4 mm<sup>2</sup> / Rated cross-section 4 mm<sup>2</sup>  
 Diode: 1 N 4007 1A 1000V / Diode: 1 N 4007 1A 1000V  
 Pz. conf: 50 / Qty. p.pck: 50

Art. 43474  grigio/grey  
 Art. 43474 BL  blu/blue

**APPROVAZIONI**

Approvals

SEV  4 mm<sup>2</sup>RINA 4 mm<sup>2</sup>VDE  4 mm<sup>2</sup>  
IEC 947-7-1UL  AWG: 24-10  
FW 2CSA  AWG: 24-10**DATI TECNICI**  
TECHNICAL DATA

**Corpo isolante: Poliammide 66.6 VO**  
 Plastic body: Polyamide 66.6 VO

**Barrette: Rame argentato**  
 Internal bus: Silver plated copper

**Massello: Acciaio, zincato e cromatizzato**  
 Clamp: Hardened steel, electroplated with zinc chromated

**Viti: Acciaio, zincate e cromatizzate**  
 Screws: Steel, zinc plated and chromated

**Tratto da spellare: 10 mm**  
 Stripping length: 10 mm

**Momento torcente: Max 0.6 Nm**  
 Tightening torque: Max 0.6 Nm

**Identificazione: a 4 posti su ambo i lati**  
 Marking: 4 slots on both sides

**Spessore (B): 6 mm**  
 Width (B): 6 mm

**Lunghezza (L): 72 mm**  
 Length (L): 72 mm

**Altezza (H): 55 mm**  
 Height (H): 55 mm

**Imbocco: 4 x 3.3 mm**  
 Opening: 4 x 3.3 mm

**Viti morsetto: M 3**  
 Terminal screw: M 3

**Resistenza alle correnti superficiali:**  
 Tracking resistance:  
 IEC 112: CTI >600  
 VDE 0303: KB >600

**CAPACITÀ DI CONNESSIONE**  
CONNECTING CAPACITY**EURO D 4-2/35 diodo/diode**

**Conduttori rigidi** mm<sup>2</sup> 0.5-6  
 Rigid conductors

**Conduttori flessibili** mm<sup>2</sup> 0.5-4  
 Flexible conductors

**Conduttori con puntalini** DIN 46288/1  
 Conductors with ferrules mm<sup>2</sup> 0.5-4

**AWG** 24-10  
 AWG

**Calibri** A4  
 Gauges

**Numero di conduttori collegabili** 4x1.5 mm<sup>2</sup>  
 Number of connectable conductors





# EURO D 4-2/35 diodo/diode

PER/for TS35x7,5 EN 60715

## APPROVAZIONI

Approvals

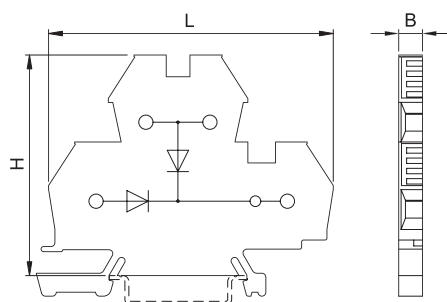
SEV  4 mm<sup>2</sup>

RINA 4 mm<sup>2</sup>

VDE  4 mm<sup>2</sup>  
IEC 947-7-1

UL  AWG: 24-10  
FW 2

CSA  AWG: 24-10



## 43475

Sezione nominale 4 mm<sup>2</sup>/Rated cross-section 4 mm<sup>2</sup>

Diode: 1 N 4007 1A 1000V/Diode: 1 N 4007 1A 1000V

Pz. conf: 50/Qty. p.pck: 50

Art. 43475  grigio/grey  
 Art. 43475 BL  blu/blue  
 Art. 43475 N  giallo/yellow

## CAPACITÀ DI CONNESSIONE CONNECTING CAPACITY

### EURO D 4-2/35 diodo/diode

Conduttori rigidi  
Rigid conductors mm<sup>2</sup> 0.5-6

Conduttori flessibili  
Flexible conductors mm<sup>2</sup> 0.5-4

Conduttori con puntalini  
Conductors with ferrules DIN 46288/1  
mm<sup>2</sup> 0.5-4

AWG  
AWG 24-10

Calibri  
Gauges A4

Numero di conduttori collegabili  
Number of connectable conductors 4 x 1.5 mm<sup>2</sup>

## DATI TECNICI TECHNICAL DATA

Corpo isolante: Poliammide 66.6 VO  
Plastic body: Polyamide 66.6 VO

Barrette: Rame argentato  
Internal bus: Silver plated copper

Massello: Acciaio, zincato  
e cromatizzato  
Clamp: Hardened steel, electroplated  
with zinc chromated

Viti: Acciaio, zincate  
e cromatizzate  
Screws: Steel, zinc plated and chromated

Tratto da spellare: 10 mm  
Stripping length: 10 mm

Momento torcente: Max 0.6 Nm  
Tightening torque: Max 0.6 Nm

Identificazione: a 4 posti su ambo i lati  
Marking: 4 slots on both sides

Spessore (B): 6 mm  
Width (B): 6 mm

Lunghezza (L): 72 mm  
Length (L): 72 mm

Altezza (H): 55 mm  
Height (H): 55 mm

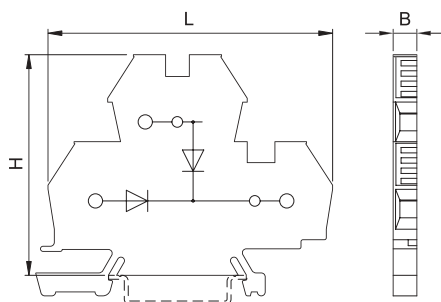
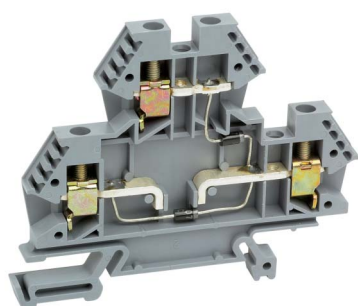
Imbocco: 4 x 3.3 mm  
Opening: 4 x 3.3 mm

Viti morsetto: M 3  
Terminal screw: M 3

Resistenza alle correnti  
superficiali:  
Tracking resistance:  
IEC 112: CTI >600  
VDE 0303: KB >600

**EURO D 4-2/35** diodo/diode

PER/for TS35x7,5 EN 60715

**43476**

Sezione nominale 4 mm<sup>2</sup> / Rated cross-section 4 mm<sup>2</sup>  
 Diode: 1 N 4007 1A 1000V / Diode: 1 N 4007 1A 1000V  
 Pz. conf: 50 / Qty. p.pck: 50

**Art. 43476**

grigio/grey

**APPROVAZIONI**

Approvals

SEV  4 mm<sup>2</sup>RINA 4 mm<sup>2</sup>VDE  4 mm<sup>2</sup>  
IEC 947-7-1UL  AWG: 24-10  
FW 2CSA  AWG: 24-10**DATI TECNICI**  
TECHNICAL DATA

**Corpo isolante: Poliammide 66.6 VO**  
 Plastic body: Polyamide 66.6 VO

**Barrette: Rame argentato**  
 Internal bus: Silver plated copper

**Massello: Acciaio, zincato e cromatizzato**  
 Clamp: Hardened steel, electroplated with zinc chromated

**Viti: Acciaio, zincate e cromatizzate**  
 Screws: Steel, zinc plated and chromated

**Tratto da spellare: 10 mm**  
 Stripping length: 10 mm

**Momento torcente: Max 0.6 Nm**  
 Tightening torque: Max 0.6 Nm

**Identificazione: a 4 posti su ambo i lati**  
 Marking: 4 slots on both sides

**Spessore (B): 6 mm**  
 Width (B): 6 mm

**Lunghezza (L): 72 mm**  
 Length (L): 72 mm

**Altezza (H): 55 mm**  
 Height (H): 55 mm

**Imbocco: 4 x 3.3 mm**  
 Opening: 4 x 3.3 mm

**Viti morsetto: M 3**  
 Terminal screw: M 3

**Resistenza alle correnti superficiali:**  
 Tracking resistance:  
 IEC 112: CTI >600  
 VDE 0303: KB >600

**CAPACITÀ DI CONNESSIONE**  
CONNECTING CAPACITY**EURO D 4-2/35 diodo/diode**

**Conduttori rigidi** mm<sup>2</sup> 0.5-6  
 Rigid conductors

**Conduttori flessibili** mm<sup>2</sup> 0.5-4  
 Flexible conductors

**Conduttori con puntalini** DIN 46288/1  
 Conductors with ferrules mm<sup>2</sup> 0.5-4

**AWG** 24-10  
 AWG

**Calibri** A4  
 Gauges

**Numero di conduttori collegabili** 4 x 1.5 mm<sup>2</sup>  
 Number of connectable conductors





# EURO D 4-2/35 diodo/diode

PER/for TS35x7,5 EN 60715

## APPROVAZIONI

Approvals

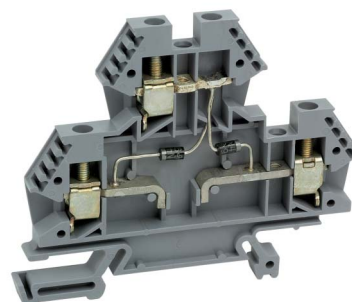
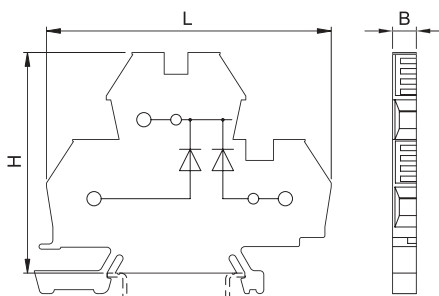
SEV  4 mm<sup>2</sup>

RINA 4 mm<sup>2</sup>

VDE  4 mm<sup>2</sup>  
IEC 947-7-1

UL  AWG: 24-10  
FW 2

CSA  AWG: 24-10



## 43477

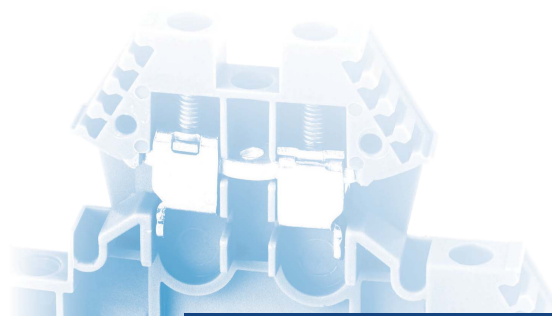
Sezione nominale 4 mm<sup>2</sup>/Rated cross-section 4 mm<sup>2</sup>

Diodo: 1 N 4007 1A 1000V/Diode: 1 N 4007 1A 1000V

Pz. conf: 50/Qty. p.pck: 50

Art. 43477

grigio/grey



## CAPACITÀ DI CONNESSIONE CONNECTING CAPACITY

### EURO D 4-2/35 diodo/diode

Conduttori rigidi  
Rigid conductors mm<sup>2</sup> 0.5-6

Conduttori flessibili  
Flexible conductors mm<sup>2</sup> 0.5-4

Conduttori con puntalini  
Conductors with ferrules DIN 46288/1  
mm<sup>2</sup> 0.5-4

AWG  
AWG 24-10

Calibri  
Gauges A4

Numero di conduttori collegabili  
Number of connectable conductors 4 x 1.5 mm<sup>2</sup>

## DATI TECNICI TECHNICAL DATA

Corpo isolante: Poliammide 66.6 VO  
Plastic body: Polyamide 66.6 VO

Barrette: Rame argentato  
Internal bus: Silver plated copper

Massello: Acciaio, zincato  
e cromatizzato  
Clamp: Hardened steel, electroplated  
with zinc chromated

Viti: Acciaio, zincate  
e cromatizzate  
Screws: Steel, zinc plated and chromated

Tratto da spellare: 10 mm  
Stripping length: 10 mm

Momento torcente: Max 0.6 Nm  
Tightening torque: Max 0.6 Nm

Identificazione: a 4 posti su ambo i lati  
Marking: 4 slots on both sides

Spessore (B): 6 mm  
Width (B): 6 mm

Lunghezza (L): 72 mm  
Length (L): 72 mm

Altezza (H): 55 mm  
Height (H): 55 mm

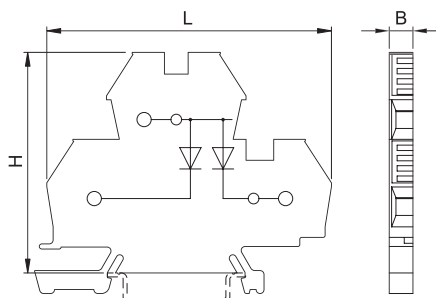
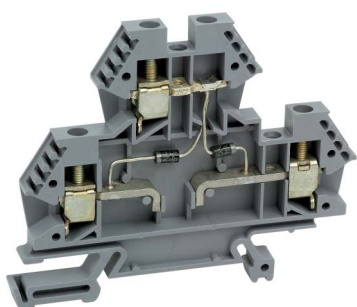
Imbocco: 4 x 3.3 mm  
Opening: 4 x 3.3 mm

Viti morsetto: M 3  
Terminal screw: M 3

Resistenza alle correnti  
superficiali:  
Tracking resistance:  
IEC 112: CTI >600  
VDE 0303: KB >600

**EURO D 4-2/35** diodo/diode

PER/for TS35x7,5 EN 60715

**43478**

Sezione nominale 4 mm<sup>2</sup> / Rated cross-section 4 mm<sup>2</sup>  
 Diode: 1 N 4007 1A 1000V / Diode: 1 N 4007 1A 1000V  
 Pz. conf: 50 / Qty. p.pck: 50

Art. **43478**

grigio/grey

**APPROVAZIONI**

Approvals

SEV  4 mm<sup>2</sup>RINA 4 mm<sup>2</sup>VDE  4 mm<sup>2</sup>  
IEC 947-7-1UL  AWG: 24-10  
FW 2CSA  AWG: 24-10**DATI TECNICI**  
TECHNICAL DATA

**Corpo isolante: Poliammide 66.6 VO**  
 Plastic body: Polyamide 66.6 VO

**Barrette: Rame argentato**  
 Internal bus: Silver plated copper

**Massello: Acciaio, zincato e cromatizzato**  
 Clamp: Hardened steel, electroplated with zinc chromated

**Viti: Acciaio, zincate e cromatizzate**  
 Screws: Steel, zinc plated and chromated

**Tratto da spellare: 10 mm**  
 Stripping length: 10 mm

**Momento torcente: Max 0.6 Nm**  
 Tightening torque: Max 0.6 Nm

**Identificazione: a 4 posti su ambo i lati**  
 Marking: 4 slots on both sides

**Spessore (B): 6 mm**  
 Width (B): 6 mm

**Lunghezza (L): 72 mm**  
 Length (L): 72 mm

**Altezza (H): 55 mm**  
 Height (H): 55 mm

**Imbocco: 4 x 3.3 mm**  
 Opening: 4 x 3.3 mm

**Viti morsetto: M 3**  
 Terminal screw: M 3

**Resistenza alle correnti superficiali:**  
 Tracking resistance:  
 IEC 112: CTI >600  
 VDE 0303: KB >600

**CAPACITÀ DI CONNESSIONE**  
CONNECTING CAPACITY**EURO D 4-2/35 diodo/diode**

**Conduttori rigidi** mm<sup>2</sup> 0.5-6  
 Rigid conductors

**Conduttori flessibili** mm<sup>2</sup> 0.5-4  
 Flexible conductors

**Conduttori con puntalini** DIN 46288/1  
 Conductors with ferrules mm<sup>2</sup> 0.5-4

**AWG** 24-10  
 AWG

**Calibri** A4  
 Gauges

**Numero di conduttori collegabili** 4 x 1.5 mm<sup>2</sup>  
 Number of connectable conductors



# EURO D 4-2/35 predisposto per diodo/ for diode

PER/for TS35x7,5 EN 60715

## APPROVAZIONI

Approvals

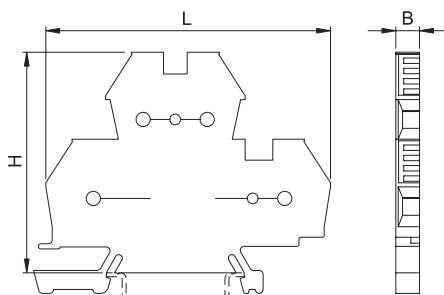
SEV  4 mm<sup>2</sup>

RINA 4 mm<sup>2</sup>

VDE  4 mm<sup>2</sup>  
IEC 947-7-1

UL  AWG: 24-10  
FW 2

CSA  AWG: 24-10



## 43479

Sezione nominale 4 mm<sup>2</sup> / Rated cross-section 4 mm<sup>2</sup>

Predisposto per diodo: 1 N 4007 1A 1000V

For diode: 1 N 4007 1A 1000V

Pz. conf: 50/Qty. p.pck: 50

Art. 43479

grigio/grey

## CAPACITÀ DI CONNESSIONE CONNECTING CAPACITY

EURO D 4-2/35 predisposto per diodo  
for diode

Conduttori rigidi  
Rigid conductors mm<sup>2</sup> 0.5-6

Conduttori flessibili  
Flexible conductors mm<sup>2</sup> 0.5-4

Conduttori con puntalini  
Conductors with ferrules DIN 46288/1  
mm<sup>2</sup> 0.5-4

AWG  
AWG 24-10

Calibri  
Gauges A4

Numero di conduttori collegabili  
Number of connectable conductors 4 x 1.5 mm<sup>2</sup>

## DATI TECNICI TECHNICAL DATA

Corpo isolante: Poliammide 66.6 VO  
Plastic body: Polyamide 66.6 VO

Barrette: Rame argentato  
Internal bus: Silver plated copper

Massello: Acciaio, zincato  
e cromatizzato  
Clamp: Hardened steel, electroplated  
with zinc chromated

Viti: Acciaio, zincate  
e cromatizzate  
Screws: Steel, zinc plated and chromated

Tratto da spellare: 10 mm  
Stripping length: 10 mm

Momento torcente: Max 0.6 Nm  
Tightening torque: Max 0.6 Nm

Identificazione: a 4 posti su ambo i lati  
Marking: 4 slots on both sides

Spessore (B): 6 mm  
Width (B): 6 mm

Lunghezza (L): 72 mm  
Length (L): 72 mm

Altezza (H): 55 mm  
Height (H): 55 mm

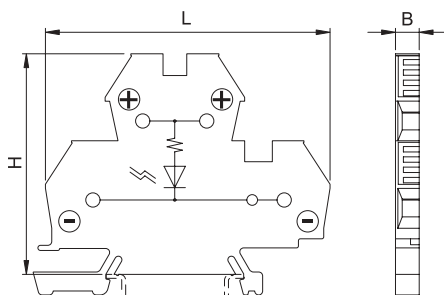
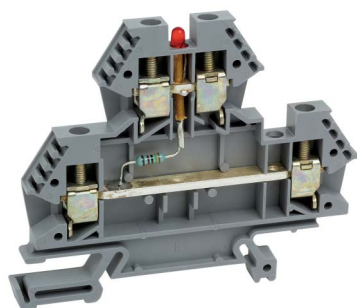
Imbocco: 4 x 3.3 mm  
Opening: 4 x 3.3 mm

Viti morsetto: M 3  
Terminal screw: M 3

Resistenza alle correnti  
superficiali:  
Tracking resistance:  
IEC 112: CTI >600  
VDE 0303: KB >600

**EURO D 4-2/35** led/led

PER/for TS35x7,5 EN 60715

**43498/43499**Sezione nominale 4 mm<sup>2</sup> / Rated cross-section 4 mm<sup>2</sup>

Pz. conf: 10/Qty. p.pck: 10

Led: rosso / Led: red

Resistenza: 3.4k/12-24 V / Resistance: 3.4k/12-24 V

**Art. 43498** grigio/grey

Resistenza: 34k/110V / Resistance: 34k/110V

**Art. 43499** grigio/grey

Altre esecuzioni: a richiesta / Other versions on request

**APPROVAZIONI**

Approvals

SEV  4 mm<sup>2</sup>RINA 4 mm<sup>2</sup>VDE  4 mm<sup>2</sup>UL  AWG: 24-10  
FW 2CSA  AWG: 24-10**DATI TECNICI**  
TECHNICAL DATA**Corpo isolante: Poliammide 66.6 VO**  
Plastic body: Polyamide 66.6 VO**Barrette: Rame argentato**  
Internal bus: Silver plated copper**Massello: Acciaio, zincato e cromatizzato**  
Clamp: Hardened steel, electroplated with zinc chromated**Viti: Acciaio, zincate e cromatizzate**  
Screws: Steel, zinc plated and chromated**Tratto da spellare: 10 mm**  
Stripping length: 10 mm**Momento torcente: Max 0.6 Nm**  
Tightening torque: Max 0.6 Nm**Identificazione: a 4 posti su ambo i lati**  
Marking: 4 slots on both sides**Spessore (B): 6 mm**  
Width (B): 6 mm**Lunhezza (L): 72 mm**  
Length (L): 72 mm**Altezza (H): 55 mm**  
Height (H): 55 mm**Imbocco: 4 x 3.3 mm**  
Opening: 4 x 3.3 mm**Viti morsetto: M 3**  
Terminal screw: M 3**Resistenza alle correnti superficiali:**  
Tracking resistance:  
IEC 112: CTI >600  
VDE 0303: KB >600**CAPACITÀ DI CONNESSIONE**  
CONNECTING CAPACITY**EURO D 4-2/35 led/led****Conduttori rigidi** mm<sup>2</sup> 0.5-6  
Rigid conductors**Conduttori flessibili** mm<sup>2</sup> 0.5-4  
Flexible conductors**Conduttori con puntalini** DIN 46288/1  
Conductors with ferrules mm<sup>2</sup> 0.5-4**AWG** 24-10  
AWG**Calibri** A4  
Gauges**Numero di conduttori collegabili** 4 x 1.5 mm<sup>2</sup>  
Number of connectable conductors



# ACCESSORI/Accessories

|   |  | art. 43461/43462<br>EURO D4-2/35                          | art. 43472÷43479<br>EURO D4-2/35 diodo                    | art.43498/43499<br>EURO D4-2/35 led                       |
|---|--|---|---|---|
| <b>Separatore</b><br><i>End plate</i><br>(poliammide 6.6/polyamide 6.6)   |  | Pz conf./Q.ty p.pck:50<br><b>43096</b><br>L=72 H=55 B=1.5 | Pz conf./Q.ty p.pck:50<br><b>43096</b><br>L=72 H=55 B=1.5 | Pz conf./Q.ty p.pck:50<br><b>43096</b><br>L=72 H=55 B=1.5 |
| <b>Protezione</b><br><i>Cover</i><br>(policarbonato/polycarbonate)  |  | Pz conf./Q.ty p.pck:50<br><b>43084</b><br>L=36 H=14 B=6   | Pz conf./Q.ty p.pck:50<br><b>43084</b><br>L=36 H=14 B=6   | Pz conf./Q.ty p.pck:50<br><b>43084</b><br>L=36 H=14 B=6   |
| <b>Conf. pettini parallelo</b><br><i>Jumper-bar package</i><br>(rame elettrolitico nichelato/<br><i>electrolytic copper nickel</i> )<br>- mezzo metro+82 viti<br><i>0.5 metre+82 screws</i> |  | <b>43082/0,5 MS</b>                                       |   |   |
| - 100 pz 2 poli+200 viti<br><i>100 pcs 2 poles+200 screws</i>   |  | <b>43082/2S</b>   |   |   |
| - 100 pz 3 poli+300 viti<br><i>100 pcs 3 poles+300 screws</i>   |  | <b>43082/3S</b>   |   |   |
| - 100 pz 4 poli+400 viti<br><i>100 pcs 4 poles+400 screws</i>   |  | <b>43082/4S</b>   |   |   |
| <b>DISPONIBILI A RICHIESTA I PARTICOLARI SEPARATI/SINGLE COMPONENTS AVAILABLE ON REQUEST</b>  |  |   |   |   |
| <b>Squadretta terminale</b><br><i>End bracket</i><br>(poliammide 6.6/polyamide 6.6)   |  | Pz conf./Q.ty p.pck:50<br><b>43442</b><br>L=58 H=36 B=9   | Pz conf./Q.ty p.pck:50<br><b>43442</b><br>L=58 H=36 B=9   | Pz conf./Q.ty p.pck:50<br><b>43442</b><br>L=58 H=36 B=9   |

**A RICHIESTA: MORSETTI CON BUSSOLE PROVATENSIONE/** *TERMINAL BLOCKS AVAILABLE WITH VOLTAGE TEST BUSHING ON REQUEST*