

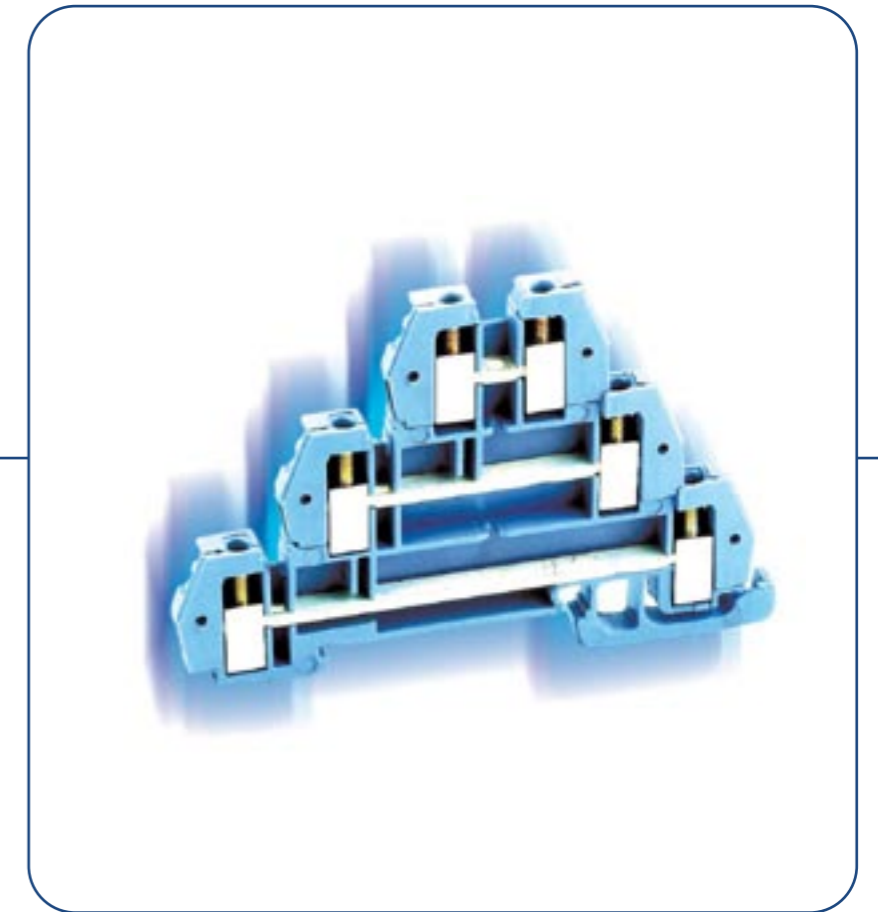


M O R S E T T I T A L I A

**Morsetti tripli**

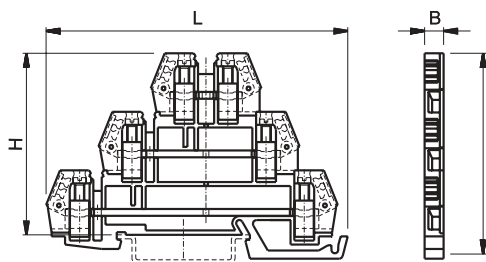
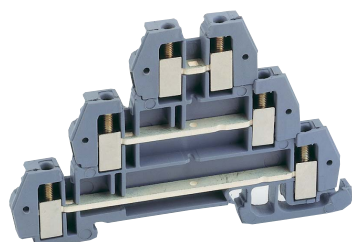
*Three-Stage Terminal Blocks*

EURO W-Z




**EURO W 2.5/35**

PER/for TS35x7,5 EN 60715

**APPROVAZIONI**

Approvals

UL  300V 10A  
AWG: 26-14

VDE  250V 24A  
IEC 947-7-1 2.5 mm<sup>2</sup>

CSA  300V 10A  
AWG: 26-14

**43501**Sezione nominale 2.5 mm<sup>2</sup>/Rated cross-section 2.5 mm<sup>2</sup>

Pz. conf: 25/Qty, p.pck: 25

Art. 43501

grigio/grey

70

**DATI TECNICI**  
TECHNICAL DATA

**Corpo Plastico: Poliammide 66.6 V0**  
Plastic body: Polyamide 66.6 V0

**Barretta: Rame argentato**  
Internal bus: Silver plated copper

**Massello: Ottone nichelato**  
Clamp: Nickel plated brass

**Viti: Acciaio, zincate e cromatizzate**  
Screws: Zinc plated chromated steel

**Tratto da spellare: 7 mm**  
Stripping length: 7 mm

**Coppia di serraggio: Max 0.5 Nm**  
Tightening torque: Max 0.5 Nm

**Spessore (B): 5.3 mm**  
Width (B): 5.3 mm

**Lunghezza (L): 78.5 mm**  
Length (L): 78.5mm

**Altezza (H): 47.5 mm**  
Height (H): 47.5 mm

**Resistenza alle correnti superficiali:**  
Tracking resistance:  
**IEC 112: CTI >600**  
**VDE 0303: KB >600**

**CAPACITÀ DI CONNESSIONE**  
CONNECTING CAPACITY**EURO W 2.5/35**

**Calibri** A2  
Gauges

**AWG** 26-14  
AWG

**Conduttori rigidi** 0.5-4 mm<sup>2</sup>  
Rigid conductors

**Conduttori flessibili** 0.5-2.5 mm<sup>2</sup>  
Flexible conductors

**Numero di conduttori collegabili** 2x1.5 mm<sup>2</sup>  
Number of connectable conductors



# EURO Z 2.5/35

PER/for TS35x7,5 EN 60715

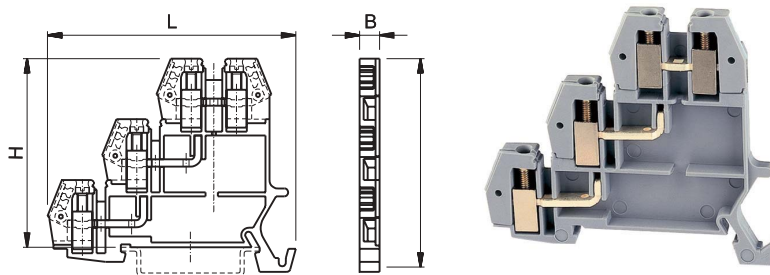
## APPROVAZIONI

Approvals

UL  300V 10A  
AWG: 26-14

VDE  250V 24A  
IEC 947-7-1 2.5 mm<sup>2</sup>

CSA  300V 10A  
AWG: 26-14



## 43521

Sezione nominale 2.5 mm<sup>2</sup> / Rated cross-section 2.5 mm<sup>2</sup>

Pz. conf: 25/Qty. p.pck: 25

Art. 43521

grigio/grey

## CAPACITÀ DI CONNESSIONE CONNECTING CAPACITY

### EURO Z 2.5/35

Calibri Gauges	A2
AWG AWG	26-14
Conduttori rigidi Rigid conductors	0.5-4 mm <sup>2</sup>
Conduttori flessibili Flexible conductors	0.5-2.5 mm <sup>2</sup>
Numero di conduttori collegabili Number of connectable conductors	2x1.5 mm <sup>2</sup>

## DATI TECNICI TECHNICAL DATA

Corpo Plastico: Poliammide 66.6 V0  
Plastic body: Polyamide 66.6 V0

Barretta: Rame argentato  
Internal bus: Silver plated copper

Massello: Ottone nichelato  
Clamp: Nickel plated brass

Viti: Acciaio, zincate e cromatizzate  
Screws: Zinc plated chromated steel

Tratto da spellare: 7 mm  
Stripping length: 7 mm

Coppia di serraggio: Max 0.5 Nm  
Tightening torque: Max 0.5 Nm

Spessore (B): 5.3 mm  
Width (B): 5.3 mm

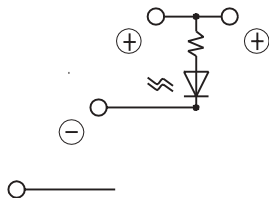
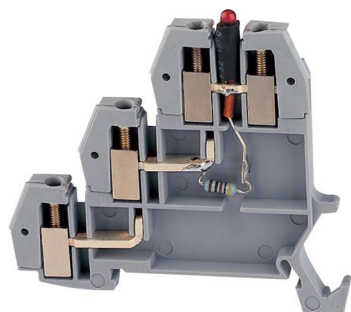
Lunghezza (L): 62 mm  
Length (L): 62 mm

Altezza (H): 47.5 mm  
Height (H): 47.5 mm

Resistenza alle correnti superficiali:  
Tracking resistance:  
IEC 112: CTI >600  
VDE 0303: KB >600

## EURO Z 2.5 LP/35

PER/for TS35x7,5 EN 60715



## APPROVAZIONI

Approvals

UL  AWG: 26-14VDE  2.5 mm<sup>2</sup>  
IEC 947-7-1CSA  AWG: 26-14

## 43523 LP

Sezione nominale 2.5 mm<sup>2</sup> / Rated cross-section 2.5 mm<sup>2</sup>

Pz. conf: 25 / Qty. p.pck: 25

Led: rosso / Led: red

Resistenza: 3.4k/12-24V / Resistance: 3.4k/12-24V

Art. 43523 LP

grigio / grey

DATI TECNICI  
TECHNICAL DATACorpo Plastico: Poliammide 66.6 V0  
Plastic body: Polyamide 66.6 V0Barretta: Rame argentato  
Internal bus: Silver plated copperMassello: Ottone nichelato  
Clamp: Nickel plated brassViti: Acciaio, zincate e cromatizzate  
Screws: Zinc plated chromated steelTratto da spellare: 7 mm  
Stripping length: 7 mmCoppia di serraggio: Max 0.5 Nm  
Tightening torque: Max 0.5 NmSpessore (B): 5.3 mm  
Width (B): 5.3 mmLunghezza (L): 62 mm  
Length (L): 62 mmAltezza (H): 47.5 mm  
Height (H): 47.5 mmResistenza alle correnti superficiali:  
Tracking resistance:  
IEC 112: CTI >600  
VDE 0303: KB >600CAPACITÀ DI CONNESSIONE  
CONNECTING CAPACITY

## EURO Z 2.5 LP/35

Calibri A2  
GaugesAWG 26-14  
AWGConduttori rigidi 0.5-4 mm<sup>2</sup>  
Rigid conductorsConduttori flessibili 0.5-2.5 mm<sup>2</sup>  
Flexible conductorsNumero di conduttori collegabili 2x1.5 mm<sup>2</sup>  
Number of connectable conductors



# EURO Z 2.5 LN/35

PER/for TS35x7,5 EN 60715

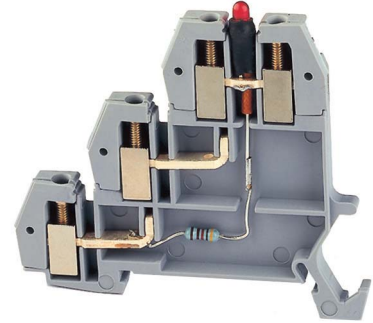
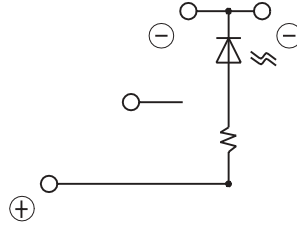
## APPROVAZIONI

Approvals

UL  AWG: 26-14

VDE  2.5 mm<sup>2</sup>  
IEC 947-7-1

CSA  AWG: 26-14



## 43524 LN

Sezione nominale 2.5 mm<sup>2</sup> / Rated cross-section 2.5 mm<sup>2</sup>

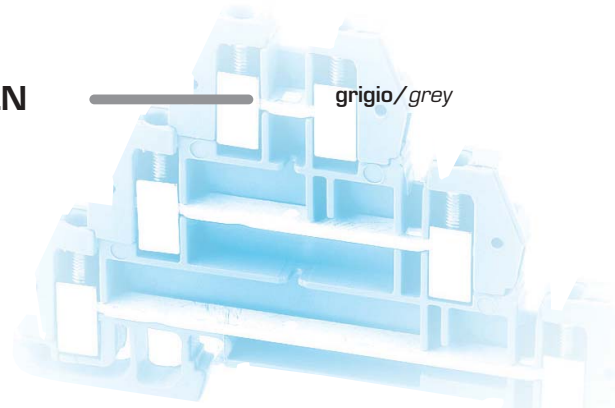
Pz. conf: 25/Qty. p.pck: 25

Led: rosso / Led: red

Resistenza: 3.4k/12-24V / Resistance: 3.4k/12-24V

Art. 43524 LN

grigio/grey



73

## CAPACITÀ DI CONNESSIONE CONNECTING CAPACITY

### EURO Z 2.5 LN/35

Calibri Gauges	A2
AWG AWG	26-14
Conduttori rigidi Rigid conductors	0.5-4 mm <sup>2</sup>
Conduttori flessibili Flexible conductors	0.5-2.5 mm <sup>2</sup>
Numero di conduttori collegabili Number of connectable conductors	2x1.5 mm <sup>2</sup>

## DATI TECNICI TECHNICAL DATA

Corpo Plastico: Poliammide 66.6 V0  
Plastic body: Polyamide 66.6 V0

Barretta: Rame argentato  
Internal bus: Silver plated copper

Massello: Ottone nichelato  
Clamp: Nickel plated brass

Viti: Acciaio, zincate e cromatizzate  
Screws: Zinc plated chromated steel

Tratto da spellare: 7 mm  
Stripping length: 7 mm

Coppia di serraggio: Max 0.5 Nm  
Tightening torque: Max 0.5 Nm

Spessore (B): 5.3 mm  
Width (B): 5.3 mm

Lunghezza (L): 62 mm  
Length (L): 62 mm

Altezza (H): 47.5 mm  
Height (H): 47.5 mm

Resistenza alle correnti superficiali:  
Tracking resistance:  
IEC 112: CTI >600  
VDE 0303: KB >600



		art. 43501 EURO W 2.5/35	art. 43521 EURO Z 2.5/35	art.43523 LP EURO Z 2.5/35 LP		art. 43524 LN EURO Z 2.5/35 LN
<b>Separatore "W"</b> End plate "W" (poliammide 66.6 VO/ polyamide 66.6 VO)		Pz conf./Q.ty p.pck:25 <b>43542</b> L=74.5 H=50 B=1.5				
<b>Separatore "Z"</b> End plate "Z" (poliammide 66.6 VO/ polyamide 66.6 VO)			Pz conf./Q.ty p.pck:25 <b>43543</b> L=55.4 H=50 B=1.5	Pz conf./Q.ty p.pck:25 <b>43543</b> L=55.4 H=50 B=1.5		Pz conf./Q.ty p.pck:25 <b>43543</b> L=55.4 H=50 B=1.5
<b>Conf. pettini parallelo</b> Jumper-bar package (rame elettrolitico stagnato/ electrolytic tin plated copper)						
- 2 poli blu 2 poles blue		Pz conf./Q.ty p.pck:100 <b>43544/02BLS</b>	Pz conf./Q.ty p.pck:100 <b>43544/02BLS</b>	Pz conf./Q.ty p.pck:100 <b>43544/02BLS</b>		Pz conf./Q.ty p.pck:100 <b>43544/02BLS</b>
- 3 poli blu 3 poles blue		Pz conf./Q.ty p.pck:100 <b>43544/03BLS</b>	Pz conf./Q.ty p.pck:100 <b>43544/03BLS</b>	Pz conf./Q.ty p.pck:100 <b>43544/03BLS</b>		Pz conf./Q.ty p.pck:100 <b>43544/03BLS</b>
- 4 poli blu 4 poles blue		Pz conf./Q.ty p.pck:100 <b>43544/04BLS</b>	Pz conf./Q.ty p.pck:100 <b>43544/04BLS</b>	Pz conf./Q.ty p.pck:100 <b>43544/04BLS</b>		Pz conf./Q.ty p.pck:100 <b>43544/04BLS</b>
- 12 poli blu 12 poles blue		Pz conf./Q.ty p.pck:10 <b>43544/12BLS</b>	Pz conf./Q.ty p.pck:10 <b>43544/12BLS</b>	Pz conf./Q.ty p.pck:10 <b>43544/12BLS</b>		Pz conf./Q.ty p.pck:10 <b>43544/12BLS</b>
- 2 poli rosso 2 poles red		Pz conf./Q.ty p.pck:100 <b>43544/02RDS</b>	Pz conf./Q.ty p.pck:100 <b>43544/02RDS</b>	Pz conf./Q.ty p.pck:100 <b>43544/02RDS</b>		Pz conf./Q.ty p.pck:100 <b>43544/02RDS</b>
- 3 poli rosso 3 poles red		Pz conf./Q.ty p.pck:100 <b>43544/03RDS</b>	Pz conf./Q.ty p.pck:100 <b>43544/03RDS</b>	Pz conf./Q.ty p.pck:100 <b>43544/03RDS</b>		Pz conf./Q.ty p.pck:100 <b>43544/03RDS</b>
- 4 poli rosso 4 poles red		Pz conf./Q.ty p.pck:100 <b>43544/04RDS</b>	Pz conf./Q.ty p.pck:100 <b>43544/04RDS</b>	Pz conf./Q.ty p.pck:100 <b>43544/04RDS</b>		Pz conf./Q.ty p.pck:100 <b>43544/04RDS</b>
- 12 poli rosso 12 poles red		Pz conf./Q.ty p.pck:10 <b>43544/12RDS</b>	Pz conf./Q.ty p.pck:10 <b>43544/12RDS</b>	Pz conf./Q.ty p.pck:10 <b>43544/12RDS</b>		Pz conf./Q.ty p.pck:10 <b>43544/12RDS</b>
<b>Squadretta terminale</b> End bracket (poliammide 6.6/polyamide 6.6)		Pz conf./Q.ty p.pck:50 <b>43442</b> L=58 H=36 B=9	Pz conf./Q.ty p.pck:50 <b>43442</b> L=58 H=36 B=9	Pz conf./Q.ty p.pck:50 <b>43442</b> L=58 H=36 B=9		Pz conf./Q.ty p.pck:50 <b>43442</b> L=58 H=36 B=9

